

\*Course Announcement\*  
Spring 2017

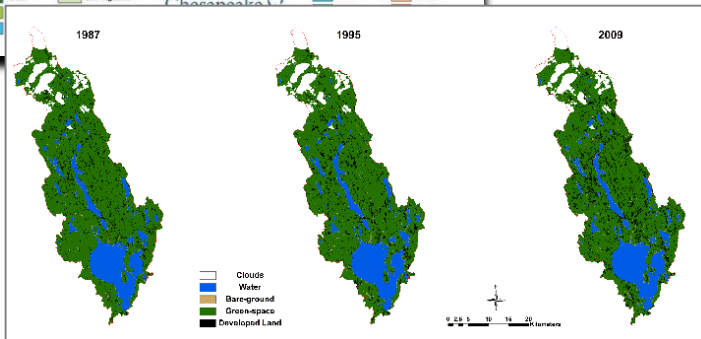
# REMOTE SENSING

(GEO 305/505/605)

Available online with  
in-person meetings

Learn to analyze and interpret satellite data.  
Apply this cutting-edge technology to solve  
problems in land use and environmental  
planning, geography, environmental science  
& policy, anthropology, biology, and more.

Also meets requirements for the GIS Certificate



For info: Dr. Firooza Pavri  
[Firooza.Pavri@maine.edu](mailto:Firooza.Pavri@maine.edu)

780-5941

